



Specification MR 400 MRI Trailer

Siemens Symphony 1.5T

Medispace offers a wide range of flexible mobile and modular solutions to fill the needs for diagnostic imaging. The interim solution will be chosen in cooperation with the customer. Every interim solution will be constantly monitored to assure an optimal service for the customer. For this service we can offer you a Siemens MRI unit in a mobile trailer. YOM 2008.

TRAILER SPECIFICATIONS

Measurement

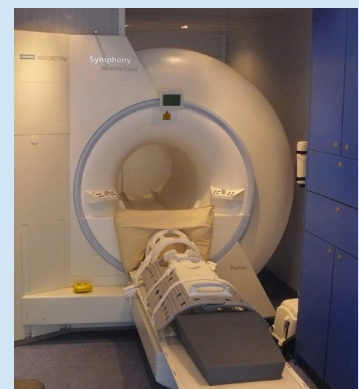
Length	13,600 mm
Width	2,600 mm
Chassis height	1,360 mm
Hydraulic steering axle	

Patient lift

Length	2,000 mm
Width	1,320 mm
Weight	29.683 kg

Electrical Requirements

- 400 volt 3 phases 50 Hz +/- 5%, fused at a minimum of 125 A.
- A 15 meter shoreline cable
- Marechal DS2 male or CEE connector
- 3 telephone sockets, 2 RJ-45 data sockets



MRI SPECIFICATIONS

MAGNETOM Symphony 1.5T
Sprint Gradient System,
Advanced Array interface,
CORE Package, Advanced 3D,
Advanced Angio Pack, Care
Bolus, EPI, Advanced Turbo

Coils

- CP Head Array Coil
- CP Spine Array Coil
- CP Neck Array Coil
- CP Body Arr. Flex Coil Kit
- CP Breast Array Coil
- CP Extremity Coil
- CP Shoulder Array Coil
- CP Flex Coil large
- CP Flex Coil small